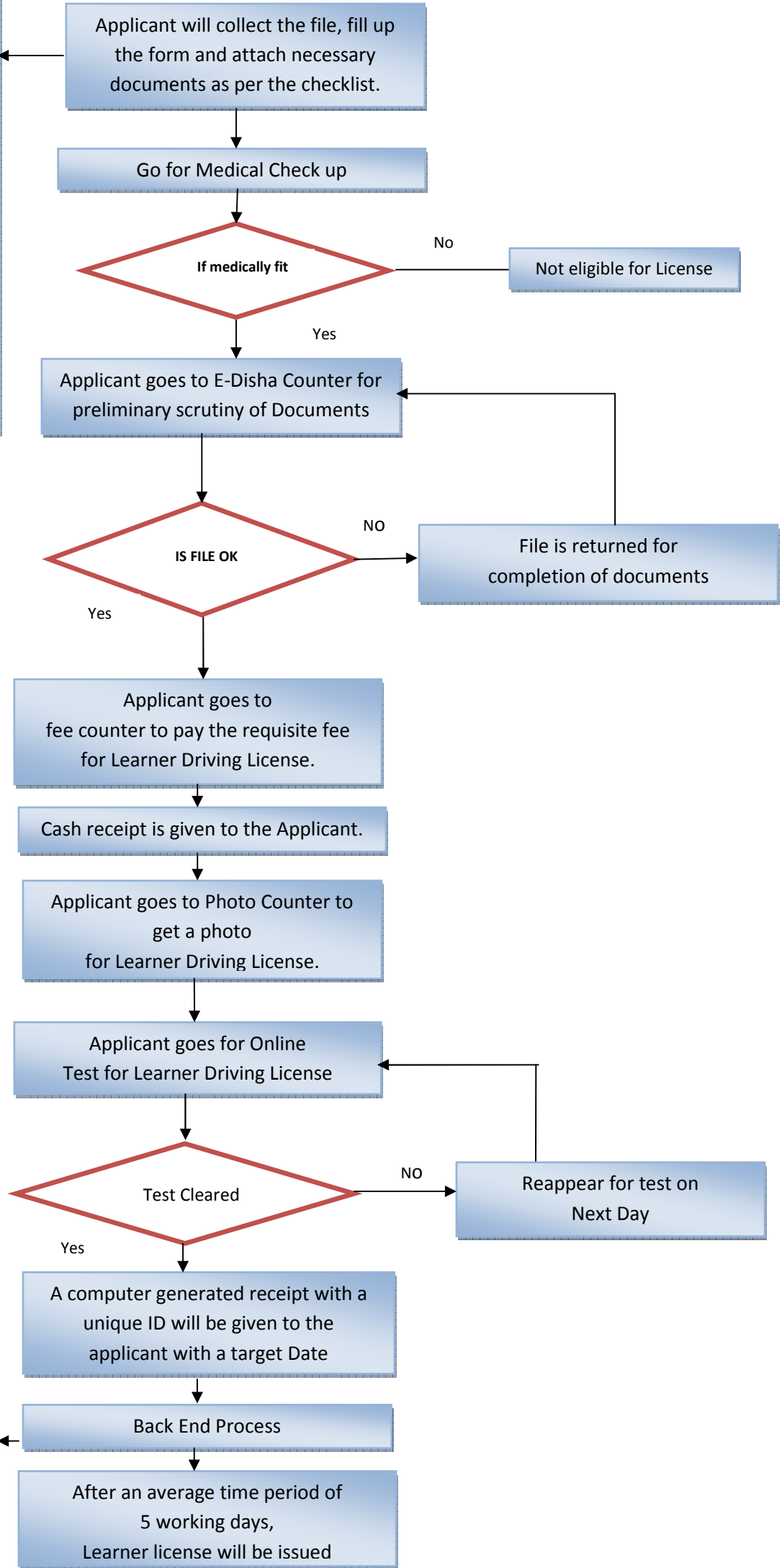


# WORK FLOW PROCESS FOR LEARNER DRIVING LICENSE

5 Days

### Availability of Form.

- 1) Applicant can download the blank form (or can get a blank file), fill the form manually and will make a complete file.
- 2) Applicant comes to E-Disha centre for getting a complete file i.e. through online filing.
- 3) Applicant can get a complete file using Web enables services with their own Computer.



### **BACK END PROCESS**

1. E-Disha operator will hand over all the documents with a check list generated by computer to the concerned clerk at the end of day.
2. Concerned clerk will verify / check the documents and submit the documents to SDM for signature
3. SDM will sign the Learner Licenses and concerned clerk will get back the signed Licenses from SDM
4. Concerned clerk will hand over the Licenses to the E- Disha's Operator. Learner License will be delivered to Applicant through Speed Post or Courier.