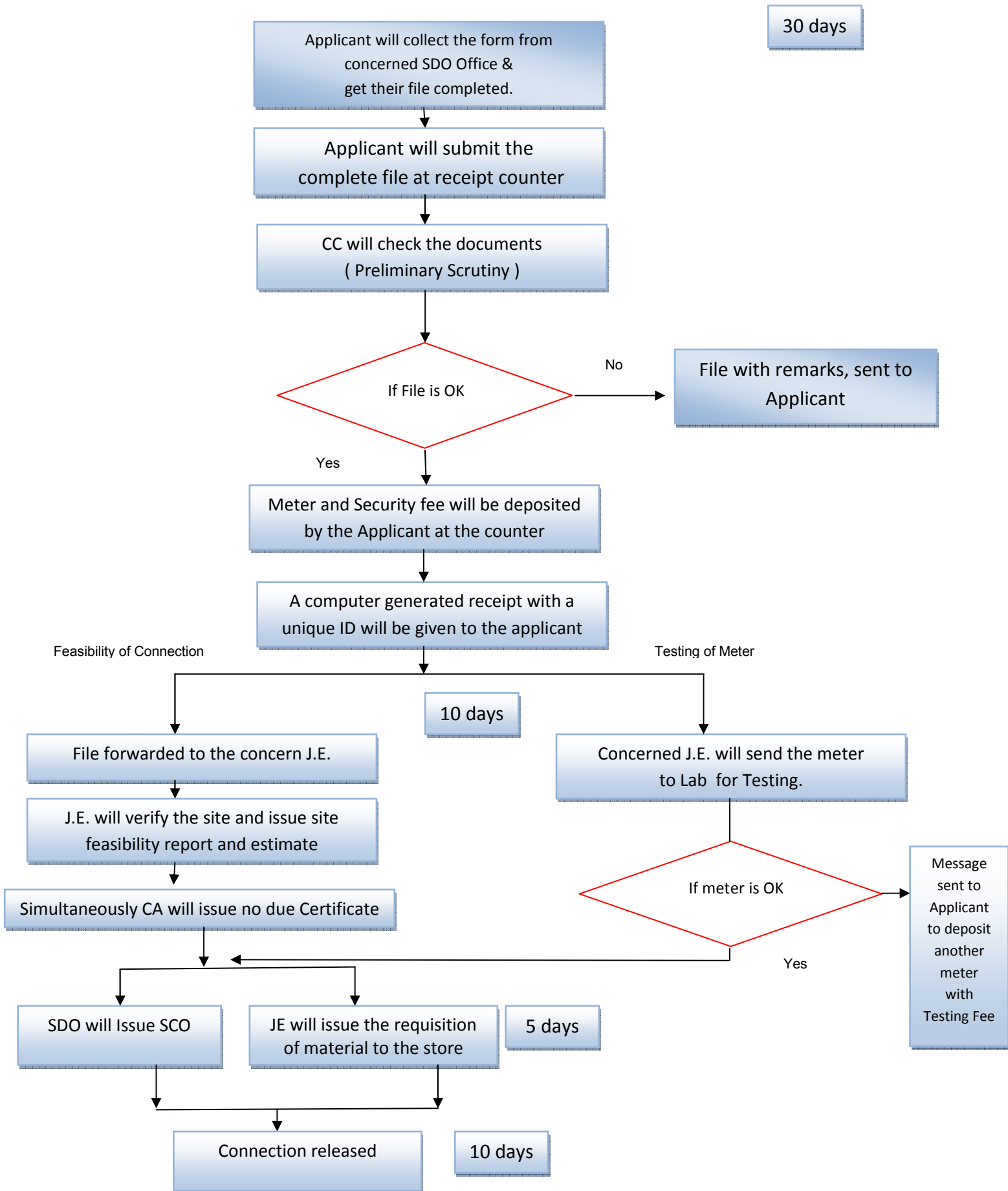


WORK FLOW PROCESS FOR NEW ELECTRICITY CONNECTION
(When Meter is Provided by the Applicant)



*** Availability of Forms :**

1. Applicant can download the blank form (or can get a blank file), fill the form manually and will make a complete file.
2. Applicant comes to E-Disha centre for getting a complete file i.e. through online filing.
3. Applicant can get a complete file using Web enables services with their own Computer.